

TARGETSCAN TOUCH™ OVERVIEW



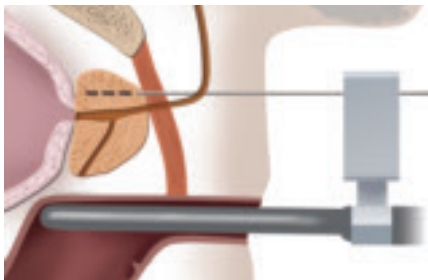
**Introducing the compact and portable
TargetScan Touch system:**

- **Stereotactic Procedures**
- **Interactive, touchscreen interface**
- **Hands-free, motionless probe**
- **Prostate mapping algorithms**
- **3-D image acquisition**

Precision at the Touch of Your Finger™

Stabilize the prostate | Image anywhere | Repeat procedures | Confidently target prostate cancer

TargetScan Touch's robotic technology eliminates prostate movement for targeted and repeatable biopsies and confident cancer treatment delivery.



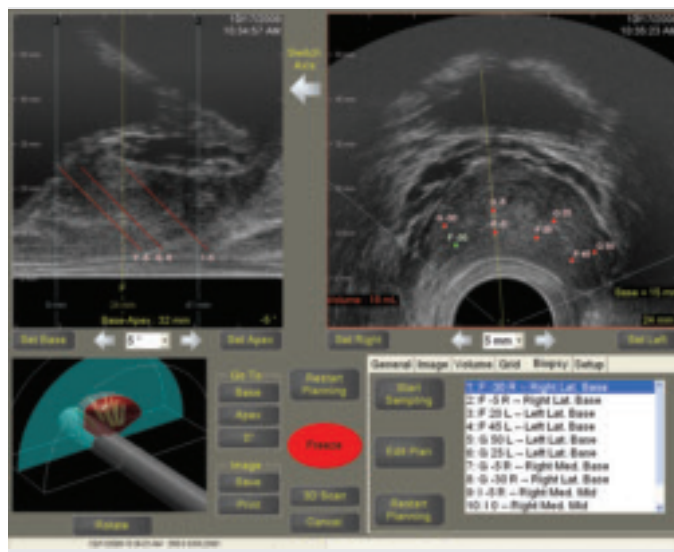
Motionless Probe

Eliminates probe-related distortion of the gland, which could move a target location

- Fixed position throughout procedure
- Easily change viewing planes by touching the screen at the desired viewing location

“TargetScan Touch provides physicians with a level of confidence that traditional hand-manipulated devices cannot deliver because they cause the prostate gland to shift. With TargetScan Touch, physicians can enjoy a touchscreen platform that is both portable and straightforward for targeting prostate cancer.”

—Robert Mills, Envisioneering Medical Technologies President



Prostate Mapping

Coordinates confirm and record pre-planned biopsy sites and assist in locating treatment targets

- Interact with both the sagittal and transverse planes
- Efficiently generate 3-D images throughout the gland
- Stereotactic imaging guides needles for diagnosis and treatment

Advantages

- Comprehensive: Achieve full prostate coverage at all times
- Confidence: Confirm desired cancer targets are reached
- Adaptable: Provides platform to integrate future research and procedure enhancements
- Additional Reimbursement Options



www.envisioneeringmedical.com

Envisioneering Medical Technologies
1982 Innerbelt Business Center Drive
St. Louis, MO 63114
P: 314.429.7367
F: 314.429.7701

KM-0021B